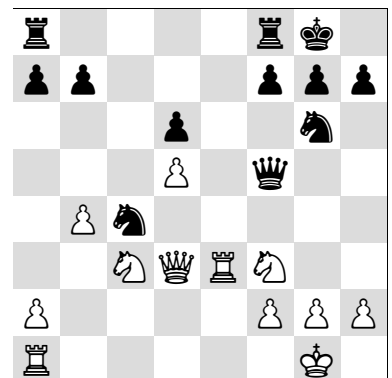
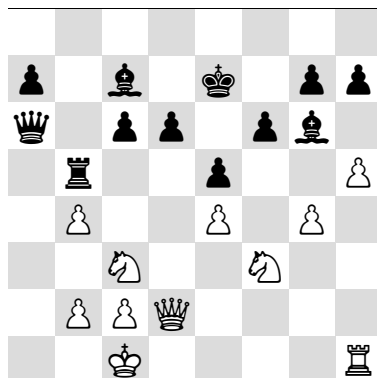
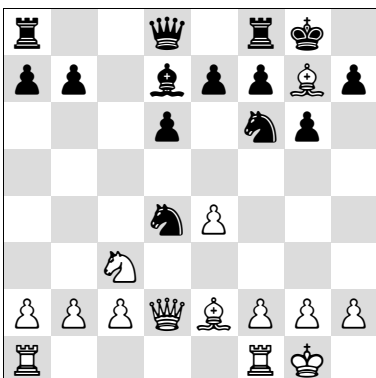
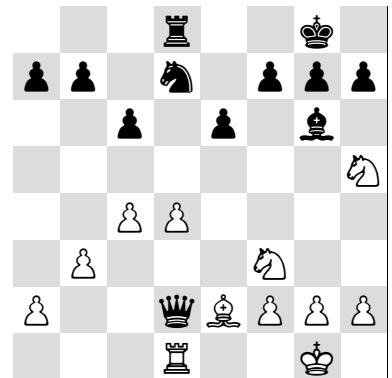
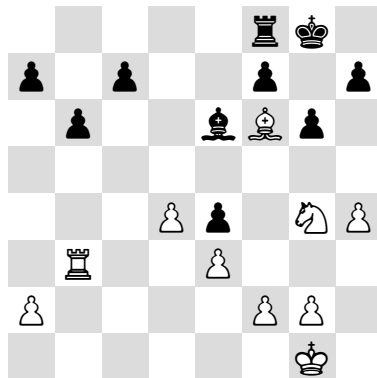
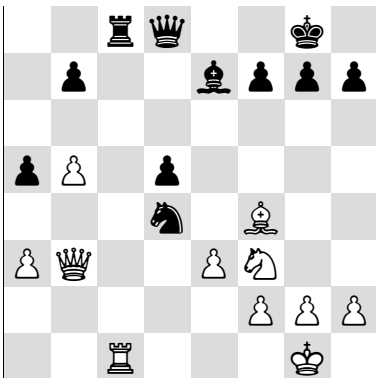
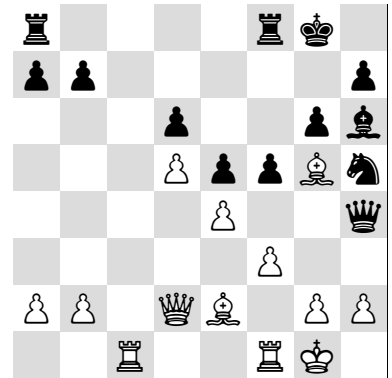
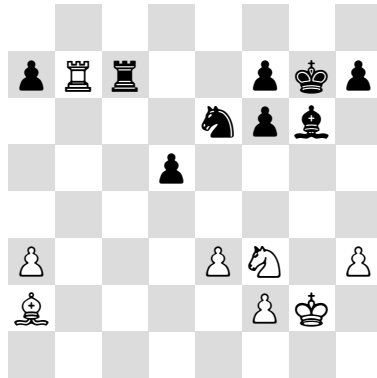
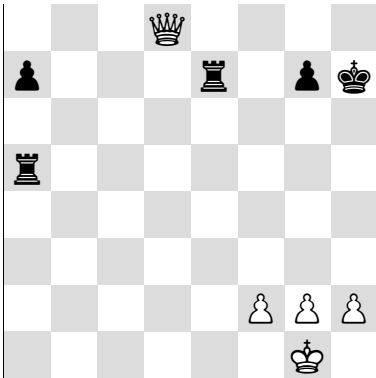
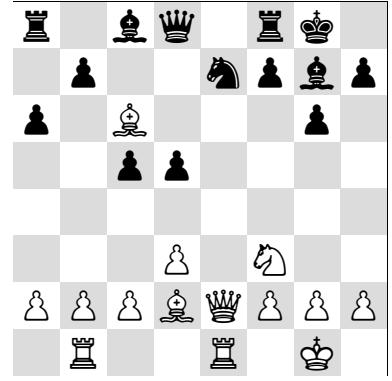
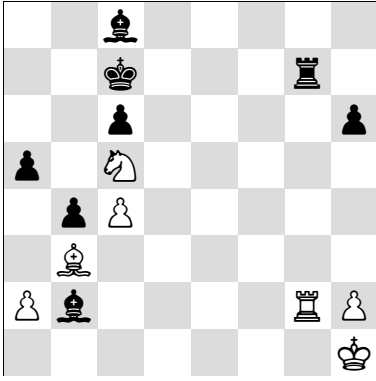
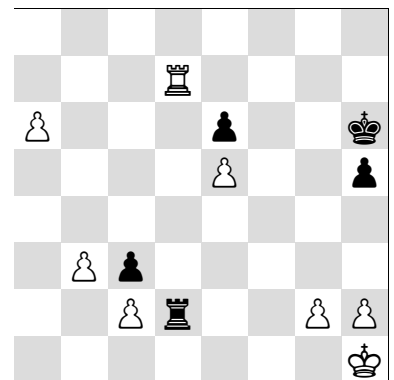
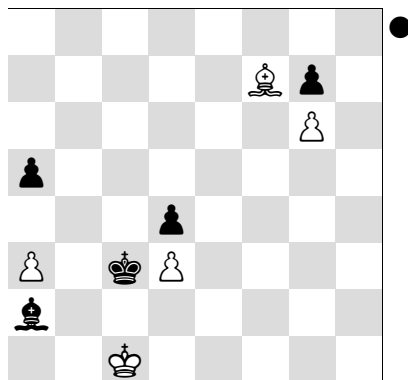
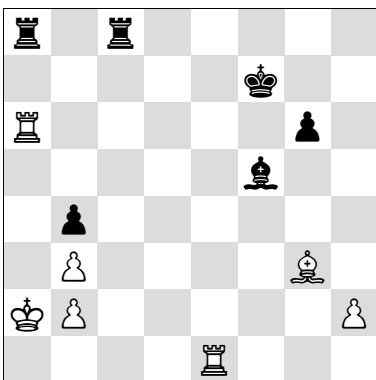
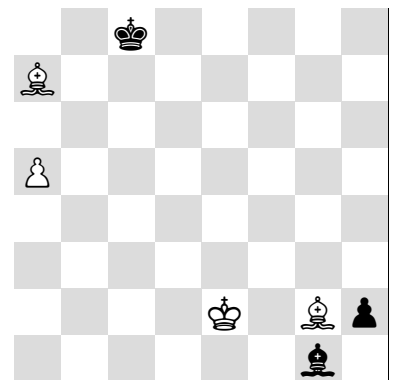
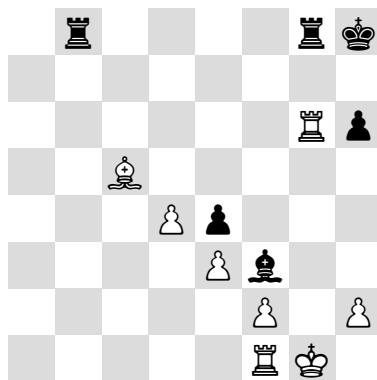
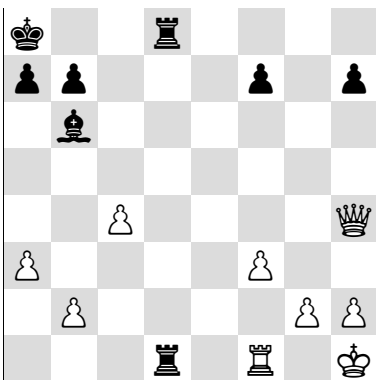
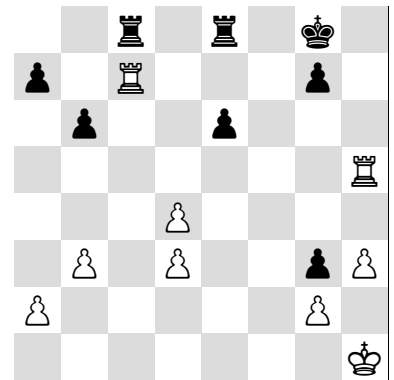
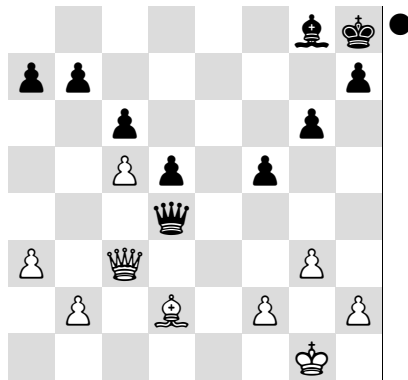
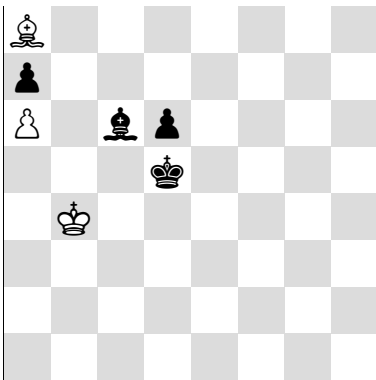
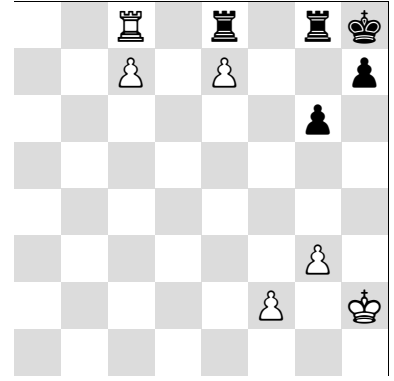
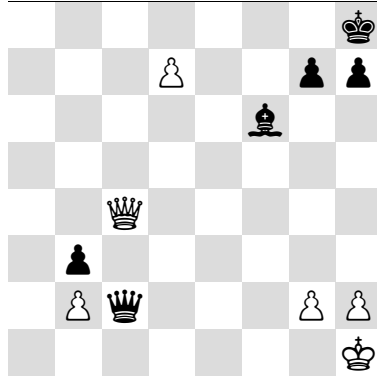
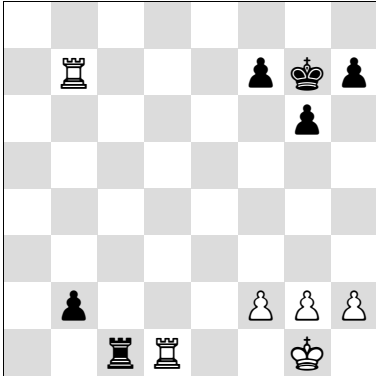


Material

Choose the correct capture: A



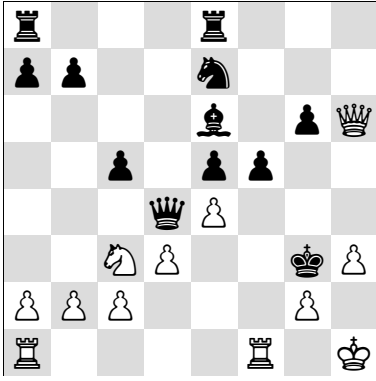
Defending



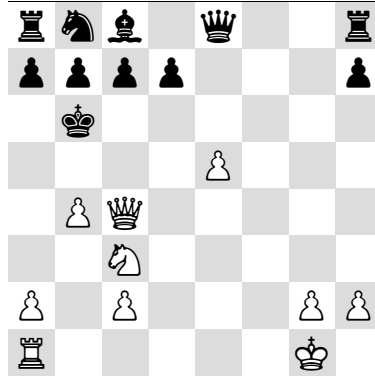
Moving away: A

Mate

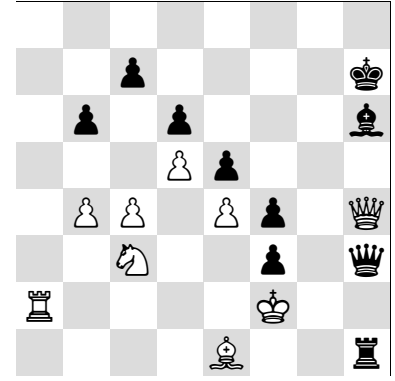
Mate in one (find as many as possible): **B**



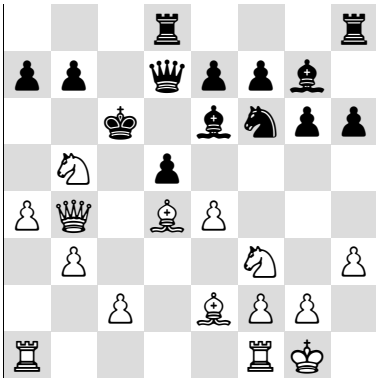
3x



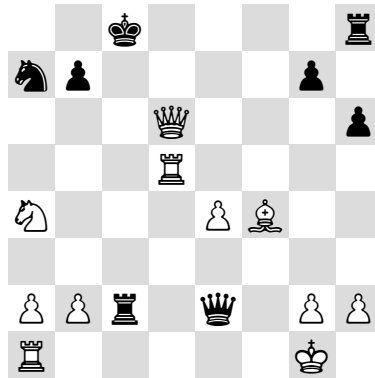
3x



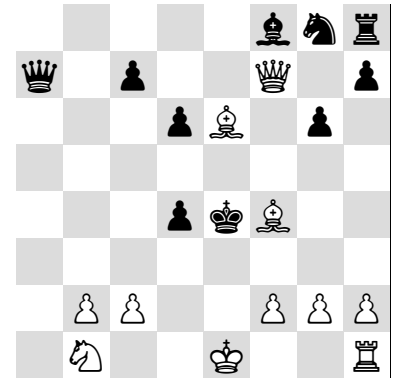
3x



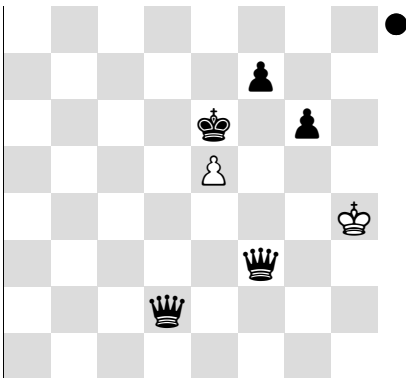
3x



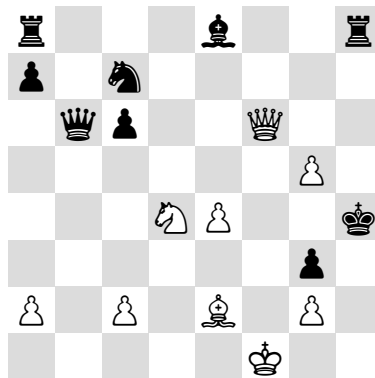
4x



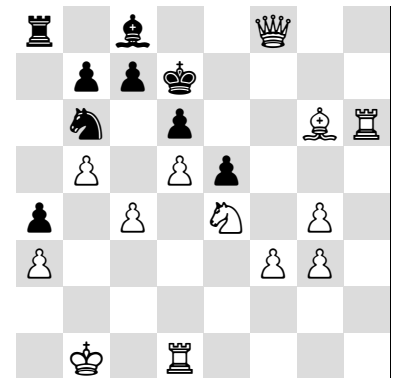
3x



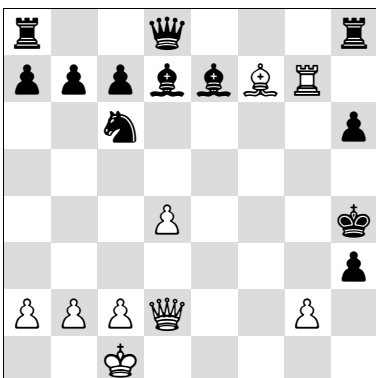
4x



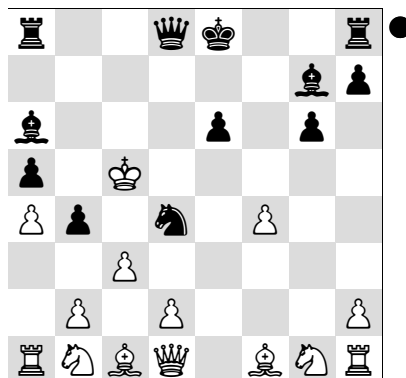
3x



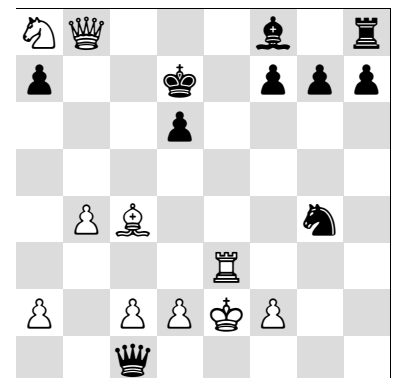
4x



3x



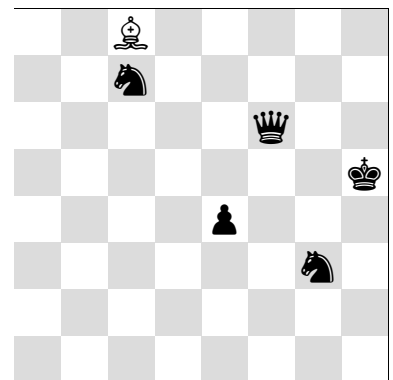
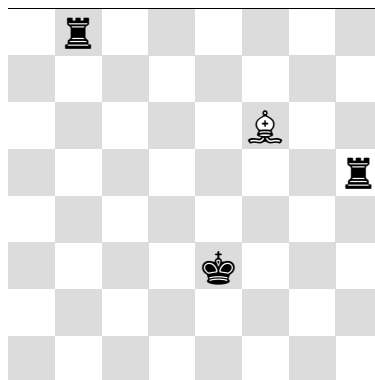
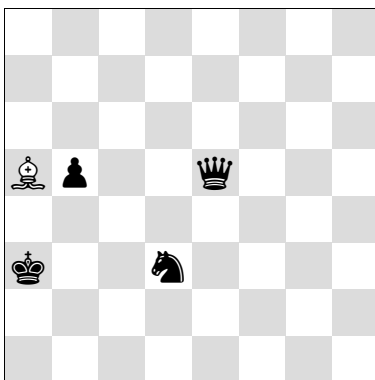
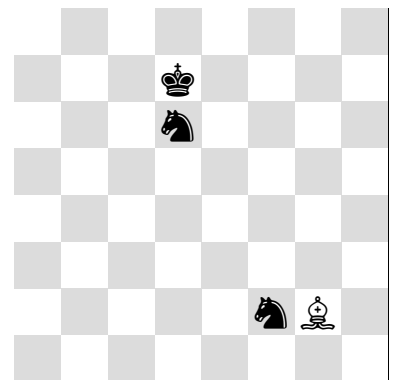
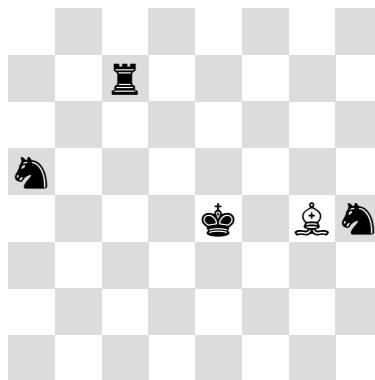
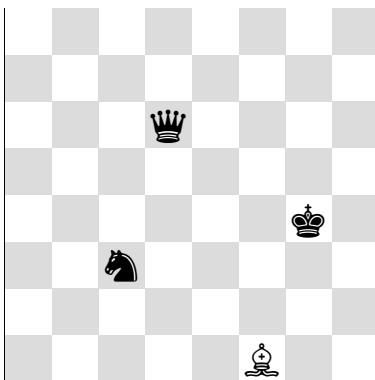
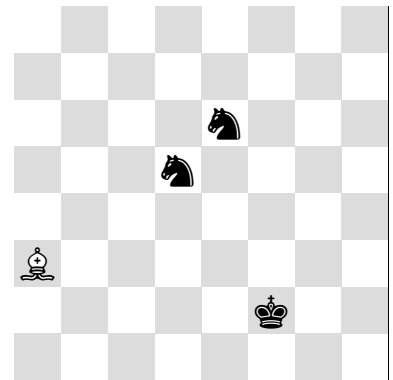
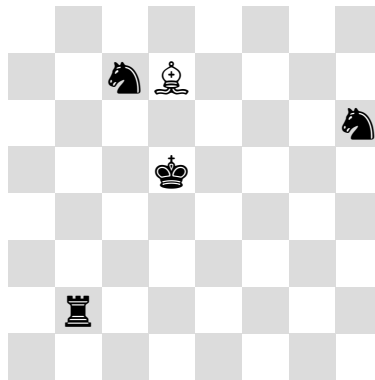
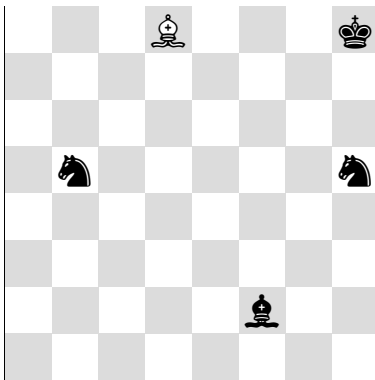
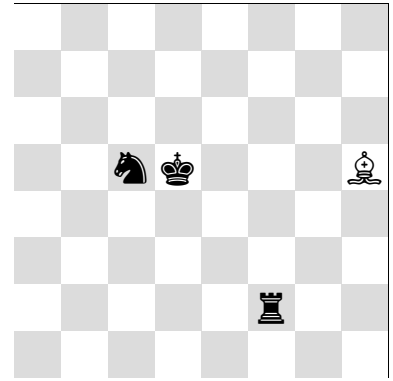
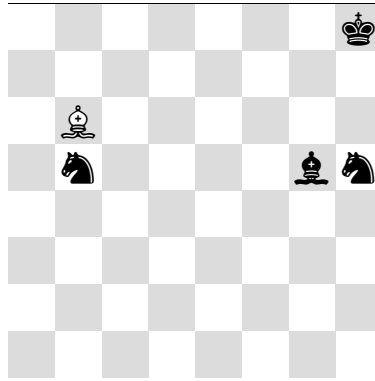
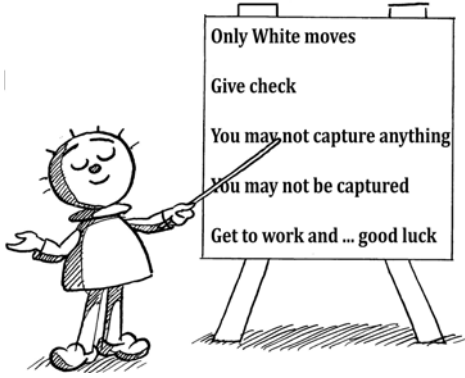
3x



3x

Route planner

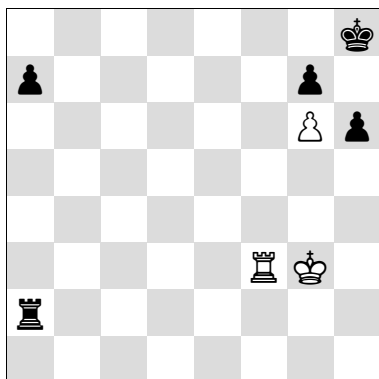
Give a safe check (in 3 moves): **A**



Defending against mate

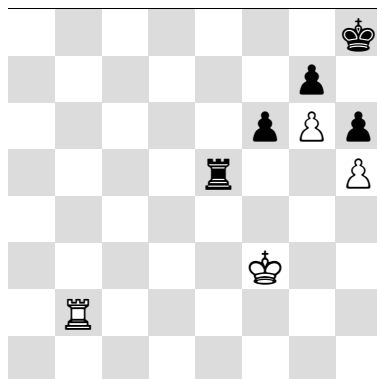
You have probably already suffered from a sudden mate. In this reminder we shall take a look at what you can do against a mating threat. Always look for the best way to defend.

- protect
- capture
- move away
- interpose



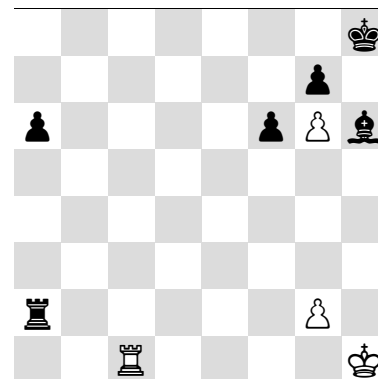
Protect

White is threatening mate with Rf3-f8#. Fortunately Black can protect f8 with the king: **1. ... Kh8-g8**.



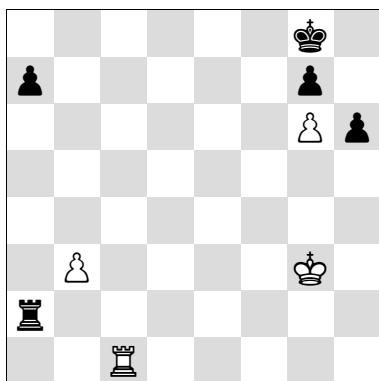
Protect

Here **1. ... Kh8-g8 2. Rb2-b8+** does not make sense. The rook must protect the back rank: **1. ... Re5-e8**.



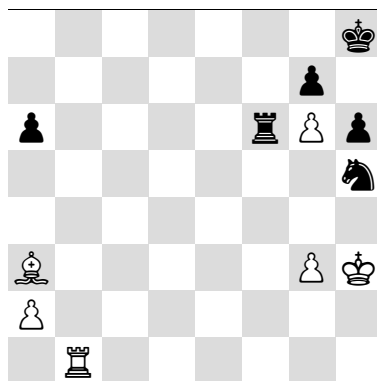
Capture

Don't move the king!
1. ... Kh8-g8 2. Rc1-c8#.
Instead, you win with the simple: **1. ... Bh6xc1**.



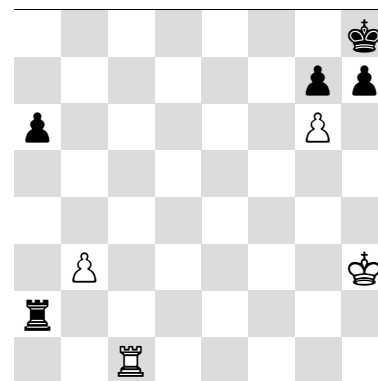
Move away

The threat is Rc1-c8#. The king must go to f8. It will escape via e7.



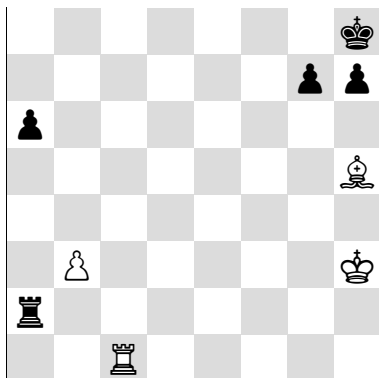
Escape square + move away

The king is under pressure. It can only move away to h7 after playing **1. ... Rf6xg6**.



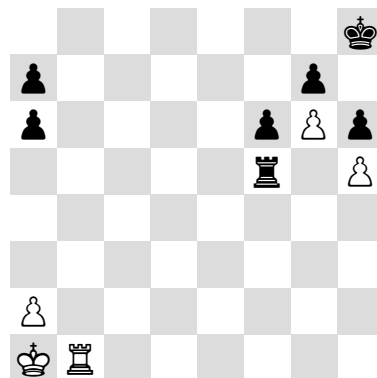
Escape square + move away

1. ... h7xg6 makes an airhole for Black and also captures an attacking piece.



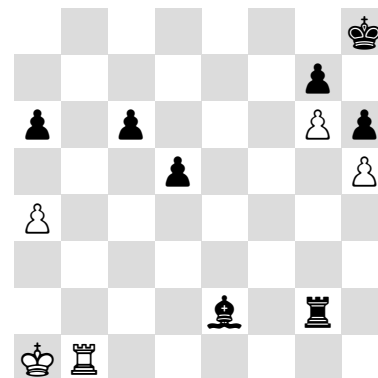
Escape square + move away

Choose the correct escape square: **1. ... g7-g6**.
1. ... h7-h6 would be silly: **2. Bh5-g6**, and Black is mated.



Interpose

Black can defend against the mate on b8 by interposing his rook with **1. ... Rf5-b5**.



Interpose

Here, interposing with **1. ... Be2-b5** costs points. That is not as bad as being mated!